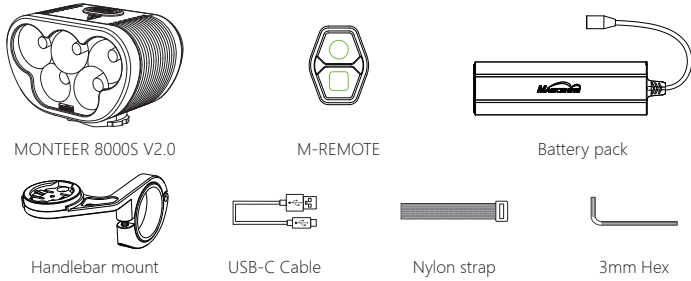
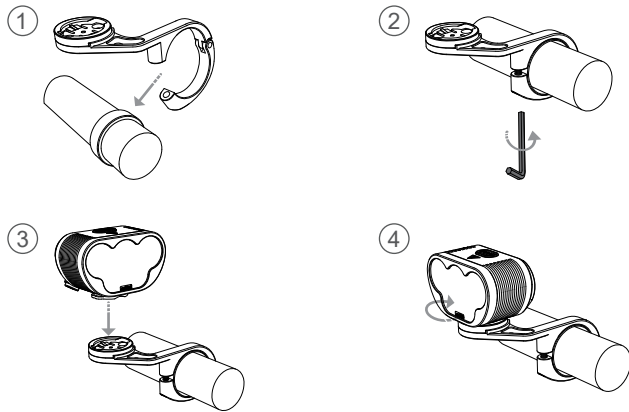


MONTEER 8000S V2.0 USER MANUAL

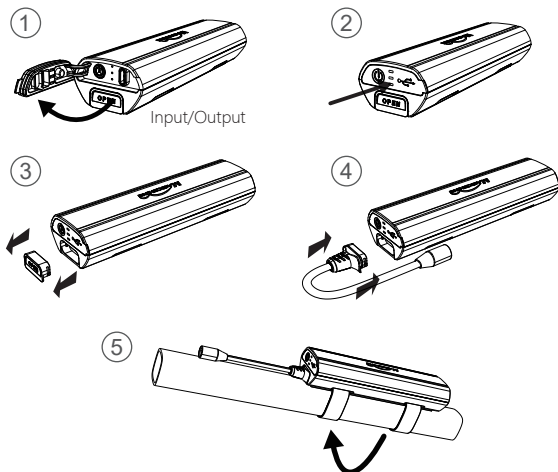
ACCESSORY/STRUCTURE



HOW TO INSTALL

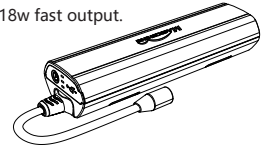


HOW TO INSTALL BATTERY PACK



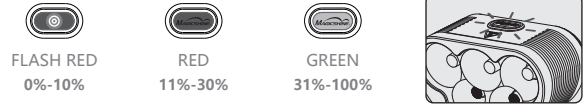
BATTERY FEATURES

High capacity battery pack with 4*21700 Li-ion battery cells 7.2V 10 Ah.
 Multiple circuit protections for safety use.
 High quality fireproof PC material for shell.
 Type-C charging & discharging integrated interface for 10w/18w fast output.

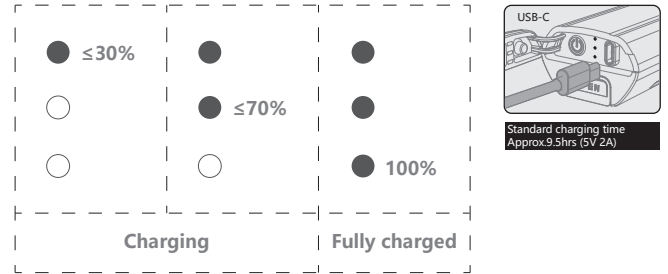


BATTERY INDICATOR

When the light is off, press the power button to display the remaining power.

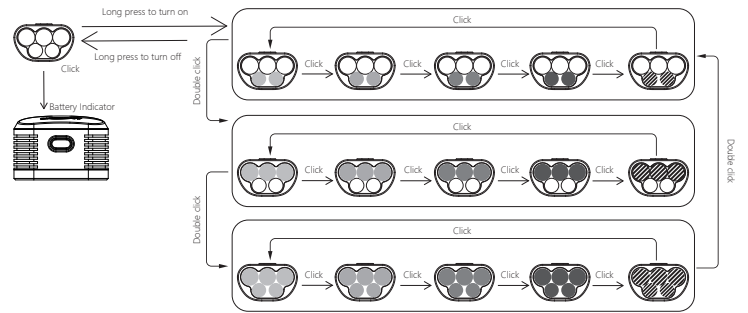


HOW TO RECHARGE



SWITCHING THE LIGHTING MODE

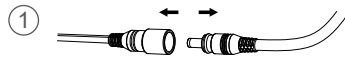
Long press power button to turn on/off
 When you turn the light on, it lights up in the last lighting mode you used.
 (Mode memory function)



LUMENS/RUN TIME

| MODE | BRIGHTNESS | ECO | LOW | MID | HIGH | FLASH |
|------|-----------------|-------|-------|-------|-------|--------|
| | LUMENS h:min | 400 | 900 | 1700 | 3200 | 0-900 |
| | LUMENS h:min | 32:00 | 15:00 | 09:00 | 04:00 | 16:00 |
| | LUMENS h:min | 600 | 1400 | 2600 | 4800 | 0-1400 |
| | LUMENS h:min | 22:00 | 11:00 | 05:30 | 02:10 | 11:30 |
| | LUMENS h:min | 1000 | 2400 | 4400 | 8000 | 0-2400 |
| | LUMENS h:min | 12:00 | 06:30 | 03:25 | 01:30 | 07:00 |

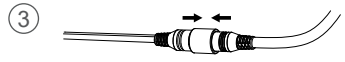
HOW TO PAIR



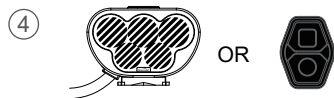
Disconnect the lighthouse from the battery



Press the two buttons at the same time until the indicator light flashes



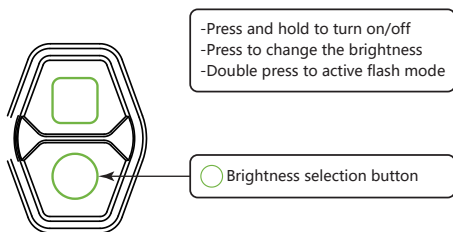
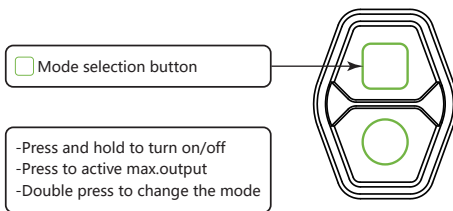
Reconnect the lighthouse to the battery



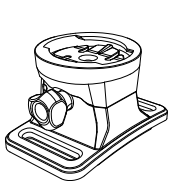
Pairing is successful: the lighthouse flashes once or the indicator light stops flashing

*The M-REMOTE can only be paired with one device. To pair a new device, please repeat the operation steps above.

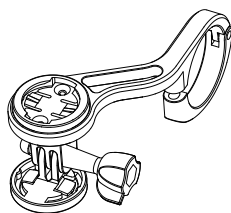
HOW TO USE THE M-REMOTE



OPTIONAL PARTS



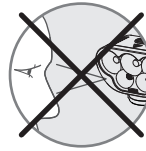
Helmet mount



TTA front mount

*Adaptable accessories (sold separately)

⚠ WARNING



EN WARRANTY

The Magicshine lighting system is warranted for 24 months from the date of purchase.

If you register the lighting system on the Magicshine website you will receive a bonus 6 month warranty.

Battery packs and AC adapters have a 6 month warranty, however, there is no bonus warranty available.

The warranty is limited to defects in material and workmanship on the lighting system itself, the battery pack and the AC adapter.

The warranty is only valid if the affected parts have not been tampered with and there is no intentional damage. Please keep your proof of purchase in a safe place. Proof of purchase must be presented in the event of any claim. Please contact the specialist retailer from whom you purchased the device for complaint or warranty claim.

Alternatively, you can send your complaint or claim directly to Magicshine at

Tel: (+86) 755-295 536 69

Fax: (+86)755-275 897 77

E-mail: support@magicshine.com (order from Magicshine.com online store)

service@magicshine.com (order from other sales channels)

In the event of a justified warranty claim and delivery of a replacement device, you will only be entitled to a model available when replacing. The manufacturer retains the right to make technical modifications.

ANSI FL 1 STANDARD

| LIGHT OUTPUT | BEAM DISTANCE | PEAK BEAM INTENSITY | IMPACT RESISTANCE | WATER RESISTANT |
|--------------|---------------|---------------------|-------------------|-----------------|
| 8000 LUMENS | 315m | 25000cd | 1m | |

